

# DURDEN & HUNT

INTERNATIONAL



Eastern Road, Romford RM1

£1,750 Per Week

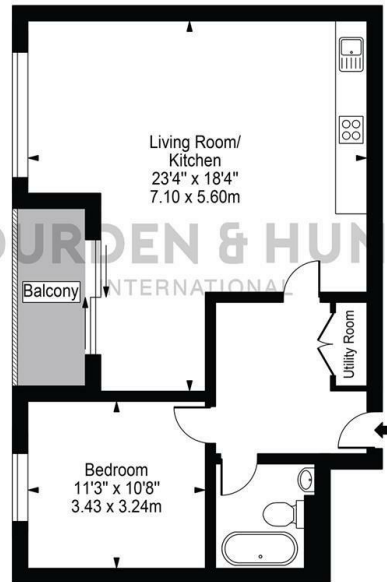
- Available Now
- Vibrant Location
- Integrated Kitchen Appliances
- Utility Cupboard
- Top Floor Apartment
- Excellent Transport Links
- Double Bedroom
- Private Balcony
- Open Plan Living Room And Kitchen
- Contemporary Family Bathroom



159 High Street, Hornchurch, Essex, RM11 3YD  
01708 202 777

[hornchurch@durdenandhunt.co.uk](mailto:hornchurch@durdenandhunt.co.uk)  
<https://www.durdenandhunt.co.uk>

Scimitar House,  
Eastern Road  
Approx. Gross Internal Area 648 Sq Ft - 60.17 Sq M



This floor plan should be used as a general outline for guidance only and does not constitute in whole or in part an offer or contract.  
Any intending purchaser or lessee should satisfy themselves by inspection, searches, enquiries and full survey as to the correctness of each statement.  
Any areas, measurements or distances quoted are approximate and should not be used to value a property or be the basis of any sale or let.

## Viewings

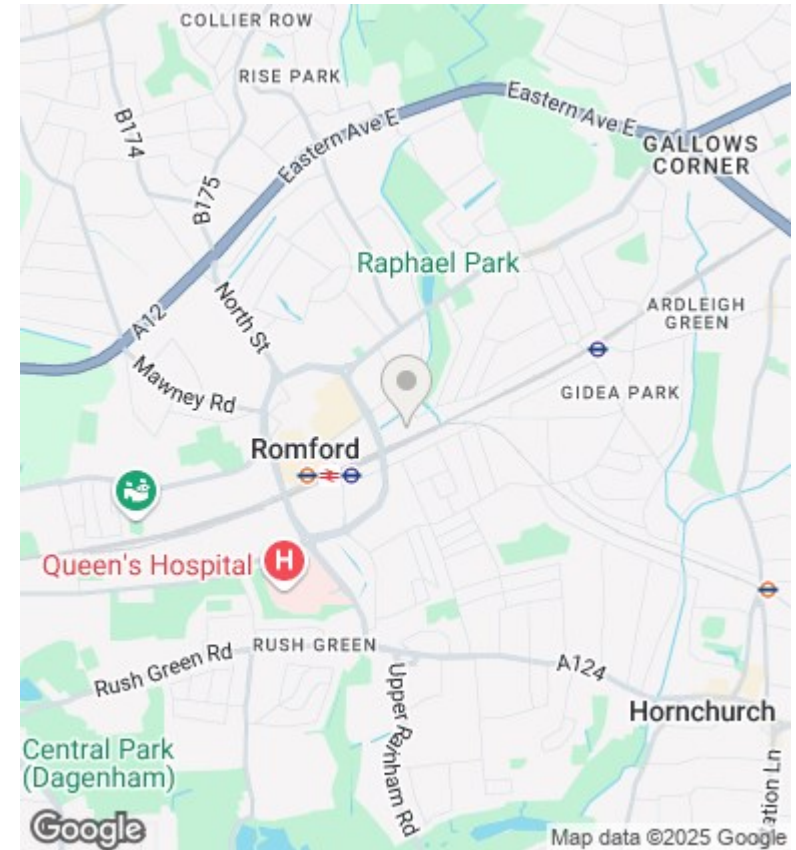
Viewings by arrangement only. Call 01708 202 777 to make an appointment.

## Council Tax Band

C

## EPC Rating:

B



Energy Efficiency Rating		
	Current	Potential
Very energy efficient - lower running costs		
(92 plus) <b>A</b>		
(81-91) <b>B</b>	81	81
(69-80) <b>C</b>		
(55-68) <b>D</b>		
(39-54) <b>E</b>		
(21-38) <b>F</b>		
(1-20) <b>G</b>		
Not energy efficient - higher running costs		
<b>England &amp; Wales</b>	EU Directive 2002/91/EC	